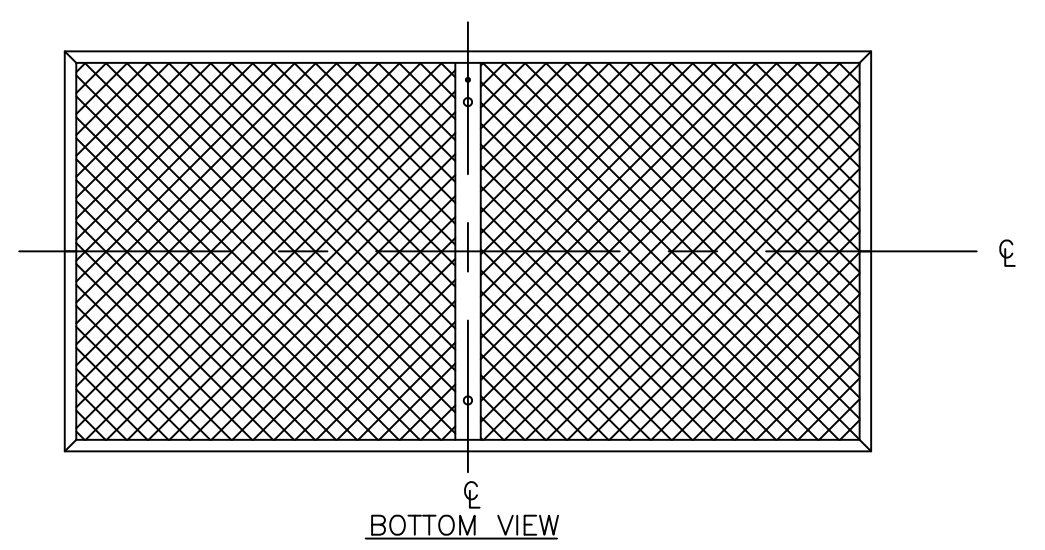
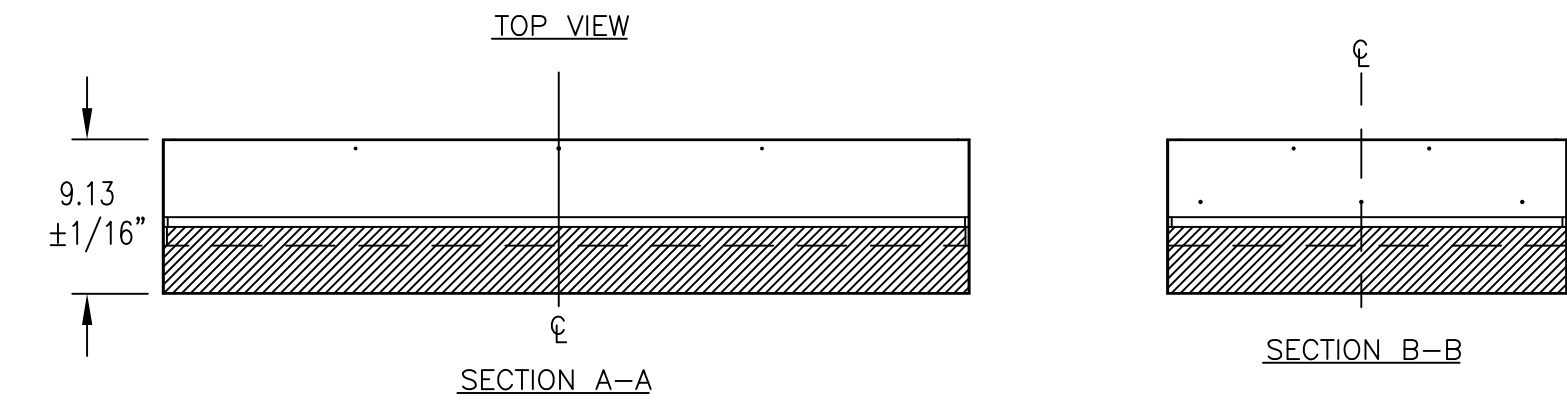
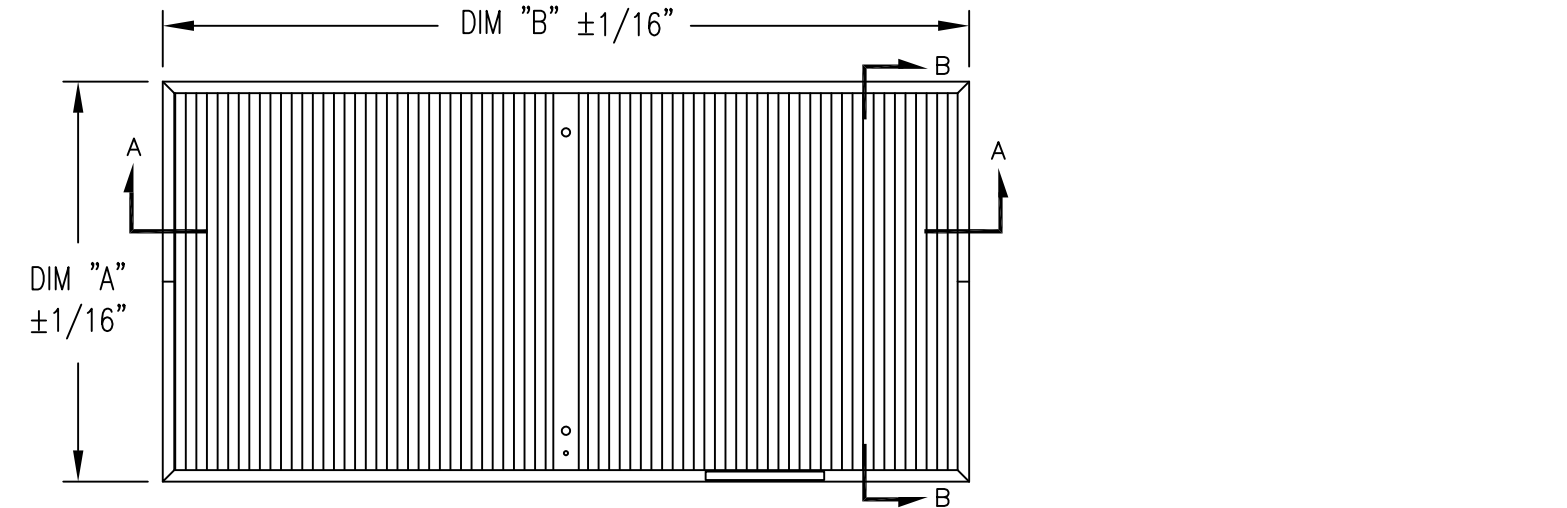


69600S - XXX X X X X X

| REV | DESCRIPTION                      | BY  | DATE    |
|-----|----------------------------------|-----|---------|
| ~   | PRODUCTION RELEASE; ECN-52102    | RCH | 7/26/13 |
| A   | DELETE 3" PLEAT SPEC.; ECN-55037 | DAR | 1/12/21 |

|                    |   |   |  |  |  |
|--------------------|---|---|--|--|--|
| SIZE:<br>SEE CHART | MEDIA:<br>[H] HEPA 99.99%<br>[4] HEPA 99.995%<br>[U] ULPA 99.9995%<br>[S] ULPA 99.9999% | CONSTRUCTION:<br>[A] ALUMINUM<br>[P] PAINTED<br>[S] STAINLESS | SCREEN:<br>[P] PAINTED<br>[S] STAINLESS<br>[L] PLASTIC<br>[Z] PAINTED ALUMINUM | INDICATOR LIGHT<br>[I] INDICATOR LIGHT<br>[X] NONE<br>[D] DUAL INDICATOR LIGHT | CHALLENGE PORT<br>[C] CHALLENGE PORT<br>[X] NONE |
|--------------------|---|---|--|--|--|

| CODE  | NOMINAL SIZE | DIM. "A" | DIM. "B" |
|-------|--------------|----------|----------|
| [001] | 2X4          | 23.625   | 47.625   |
| [002] | 2X3.5        | 23.625   | 41.625   |
| [003] | 2X3          | 23.625   | 35.625   |
| [004] | 2X2          | 23.625   | 23.625   |
| [005] | 2X4          | 23.125   | 47.125   |
| [006] | 2X3.5        | 23.125   | 41.125   |
| [007] | 2X3          | 23.125   | 35.125   |
| [008] | 2X2          | 23.125   | 23.125   |
| [009] | 2X4          | 23.000   | 47.000   |
| [010] | 2X3.5        | 23.000   | 41.000   |
| [011] | 2X3          | 23.000   | 35.000   |
| [012] | 2X2          | 23.000   | 23.000   |
| [013] | 585X1185     | 23.032   | 46.654   |
| [014] | 585X1035     | 23.032   | 40.748   |
| [015] | 585X885      | 23.032   | 34.843   |
| [016] | 585X585      | 23.032   | 23.032   |



- NOTES:
- FILTER MEDIA: MICROGLASS FIBER WITH ACRYLIC LATEX BINDER
  - PLEAT DEPTH: 53 MM PLEAT
  - EFFICIENCY:
    - H= HEPA = 99.99% EFFICIENT @ 0.30µm (IEST-RP-C007)
    - 4= HEPA = 99.995% EFFICIENT @ 0.20µm (IEST-RP-C007)
    - U= ULPA = 99.9995% EFFICIENT @ 0.12µm (IEST-RP-C007)
    - S= ULPA = 99.99999% EFFICIENT @ 0.12µm (IEST-RP-C007)
  - RESISTANCE:
    - H= HEPA = 0.45" ±0.02" W.G. AT 100 FPM
    - 4= HEPA = 0.50" ±0.02" W.G. AT 100 FPM
    - U= ULPA = 0.52" ±0.02" W.G. AT 100 FPM
    - S= ULPA = 0.62" ±0.02" W.G. AT 100 FPM
  - SEPARATOR MATERIAL: PER MANUFACTURES SPEC
  - FRAME MATERIAL: ANODIZED ALUMINUM
  - GRILLE MATERIAL: EXPANDED METAL PAINTED WHITE
  - SEALANT MATERIAL: FIRE RETARDANT TWO-PART URETHANE
  - EFFICIENCY TEST: HEPA = TYPE J FILTER (IEST-RP-C034)  
ULPA = TYPE F FILTER (IEST-RP-C034)
  - FIRE RATING: GRADE 4 UL-900

| DIMENSION ARE IN INCHES               |                         | MATERIAL: |  | TRION                                |         |         | FILTER - MAC10 STD, SUBMITTAL |      |     | REV   |       |
|---------------------------------------|-------------------------|-----------|--|--------------------------------------|---------|---------|-------------------------------|------|-----|-------|-------|
| TOLERANCES-UNLESS OTHERWISE SPECIFIED |                         |           |  | PROPERTY OF TRION, SANFORD, NC 27330 |         |         |                               |      |     | A     |       |
| .X OR X/X ±.05                        | CONC .005 TIR           |           |  | REV                                  | RCH     | DATE    | RCH                           | DATE | APP | DAR   | SCALE |
| .XX ±.03                              | BEND RAD: DWG 122223    |           |  | 7/26/13                              | 7/26/13 | 7/26/13 |                               |      |     | 1/1   |       |
| .XXX ±.015                            | FINISH: NONE            |           |  |                                      |         |         |                               |      |     | SHEET |       |
| ANGULAR ±1°                           | REMOVE BURRS AND SHARPS |           |  |                                      |         |         |                               |      |     | 1/1   |       |

8000011