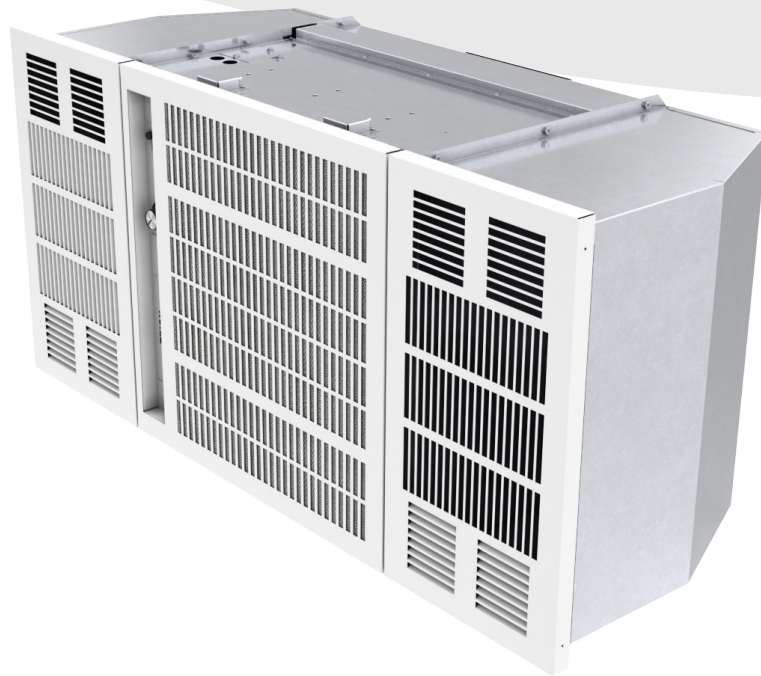


TRION[®]

Indoor Air Quality



READ AND SAVE THESE INSTRUCTIONS

IsoClean FM
Flush Mount Air Cleaner

Flush Mount Air Cleaner
IsoClean FM
TABLE OF CONTENTS

Specifications 3
Principles of Operation 3
New Unit Inspection..... 3
Preparation and Installation..... 3
Unit Operation 4
Maintenance..... 5
Troubleshooting..... 6
Wiring Diagram..... 7
Replacement Parts 8
Airflow Curves 9
Warranty 13

Specifications

| | |
|------------------------------|--|
| Air Handling Capacity | <ul style="list-style-type: none"> 300 - 700 CFM (50 - 310 CFM for HEPA) |
| Power Requirements | <ul style="list-style-type: none"> 1/3HP, 120V/60HZ/1PH, 4.5A |
| Controls | <ul style="list-style-type: none"> Bluetooth Control |
| Cabinet Dimensions | <ul style="list-style-type: none"> 48" L x 23" W x 20" H |
| Weight | <ul style="list-style-type: none"> 92 lbs. |
| Filter Options | |
| Pre-Filter (Standard) | <ul style="list-style-type: none"> Aluminum Mesh Filter, 19" H x 22" W x 1" D |
| Main Filter | <ul style="list-style-type: none"> MERV14 Filter, 20" H x 21" W x 5" D 99.99% HEPA Filter (Opt.) |

The IsoClean FM unit consists of four basic components:

1. A cabinet for housing all components
2. A blower for moving the air
3. Electrical wiring
4. Pre-filter and Main Filter

Principles of Operation

The air in any room contains millions of particles of dust. The composition of the dust will vary depending on the environment. The dust may be in the form of smoke, airborne dirt from outside, small particles of grease or moisture. The size of the particles (or particulate) will range from as little as microns to anything large enough to remain airborne in the air. (A micron is one millionth of a meter.)

When the unit is turned on, the blower begins moving the air through the aluminum mesh pre-filter. The air then passes through the main filter where the dust or smoke is trapped in the filter fibers. The filtered air is exhausted into the space through the louvers on the sides of the IsoClean FM. As more contaminants are collected in the filters, the efficiency of the media increases until airflow is substantially reduced. Once the airflow is severely restricted, it is time to change the filter.

New Unit Inspection

Immediately upon receiving the unit, carefully examine the skid for damage during transit. If unit is damaged, contact the last carrier for filing a claim and contact your local distributor.

Preparation & Installation

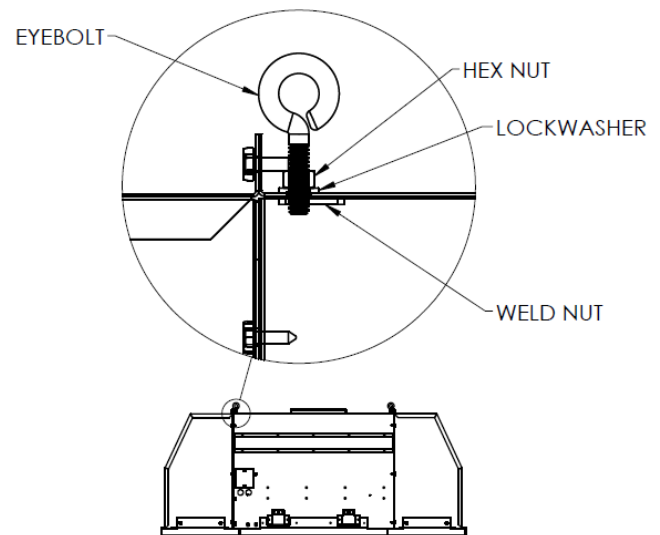
The following are guidelines for installation, however, alternate methods may be equally adequate.

CAUTION

The installation should conform to all local ordinances associated with building codes and electrical codes required for the unit. Authorities having jurisdiction should be consulted before installation is made. If there are no local codes, the installation should conform to the National Electric Code.

This manual should be carefully read before starting the preparation and installation of the air cleaner. For maximum air cleaning efficiency, your air cleaner should be located as specified by your local distributor.

The unit can be either chain-hung or suspended from threaded rod. Eye bolts can be installed on the unit and are provided in a small envelope. Positioning brackets (x2) are provided in the packaging. Hardware to attach to the unit is also provided in the small envelope. An example of eyebolt installation is shown below.



All materials used for mounting and suspending the unit must be able to support the weight of the unit and the material collected. Consult local building codes for proper installation procedures and appropriate hardware.

For alternate installation methods, contact your local distributor.

Unit Operation

The IsoClean FM is designed to be permanently connected to fixed wiring. See the wiring diagram in this manual for connection. All wiring must meet local National Electrical Codes.

The unit comes equipped with a bluetooth control, a green LED indicator light for unit power, pre-filter, and a main filter. Please see the maintenance section for filter access instructions.

The green LED indicator light on the unit requires electrical power at the unit and the access door closed to actuate the safety switch. Please see the example of the control panel below.



Control Panel

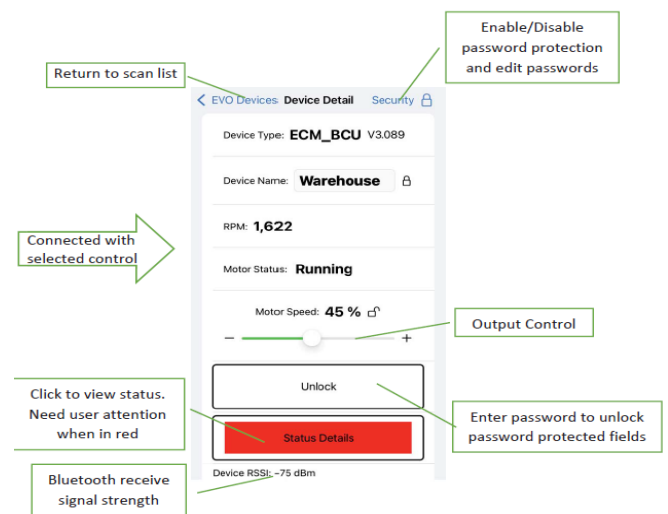
The bluetooth control comes preset at the factory at 50% speed.

To control the IsoClean FM, app access is required. Go to the local Android or Apple store and search EVO Devices. Make sure to have bluetooth enabled on your device. Apple iPhones require a passkey to utilize the app. The passkey is 529413.

When communicating to the IsoClean FM, the bluetooth light on the face of the unit will be solid on. The main screen will have a green button stating Start Scan. Press this button. Once pressed, the app will scan for any IsoClean FM's. An example of this screen is provided.



Once an IsoClean FM unit is selected, you will be shown a screen that has many different capabilities. In the top left, you can return to the scan list. In the top right, you can enable/disable password protection and edit passwords. Information about the IsoClean FM will be shown below including name, RPM, motor status, and ability to change the motor run speed. Example screen below.



While the unit is running without connection to the app, the bluetooth light on the face of the unit will flash short flashes and long flashes to give motor run speed. Short flashes are the 10 digit while long dashes are the 1 digit.

Maintenance

The IsoClean FM will require a minimum amount of maintenance to keep in good operating condition. You can do all normal preventative maintenance, or your local distributor may offer a maintenance and cleaning contract at a nominal charge. Contact them for details.

The main filter is changed once airflow is severely restricted. The pre-filter can be replaced or washed and cleaned (wait for the pre-filter to dry before inserting into the unit). Once a pattern has been established, the pre-filters and main filter can be replaced on a calendar basis.

Accessing the Filters

Remove power to the unit before servicing. First remove the access door by removing the two pan head screws. The door is hinged on the opposite side. Electrical power is disconnected when the access door is opened.

The aluminum mesh pre-filter can be removed from the from access door by applying pressure to the pre-filter frame away from the holding bracket.

The pleated main filter can be removed by sliding the holding latches towards the unit. The filter can then be removed starting at the edge near the holding latches. When installing the pleated main filter, insert the filter on the opposite end of the latches inside the cabinet.



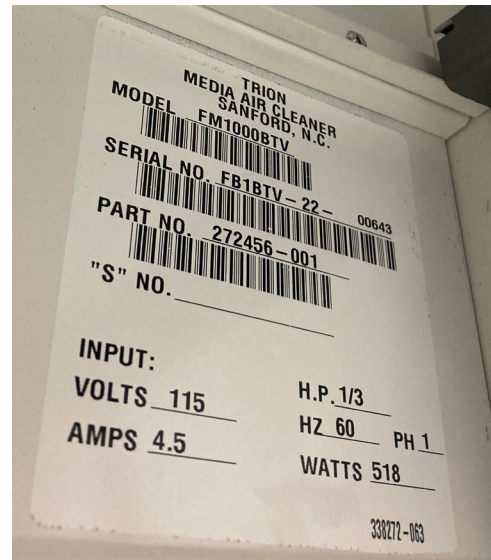
Remove Screws

With the filter removed, the wiring diagram and serial label will be visible on the side of the housing adjacent to the control panel. Please see the images below for reference.

Maintenance



Access Door Opened



Example Serial Label

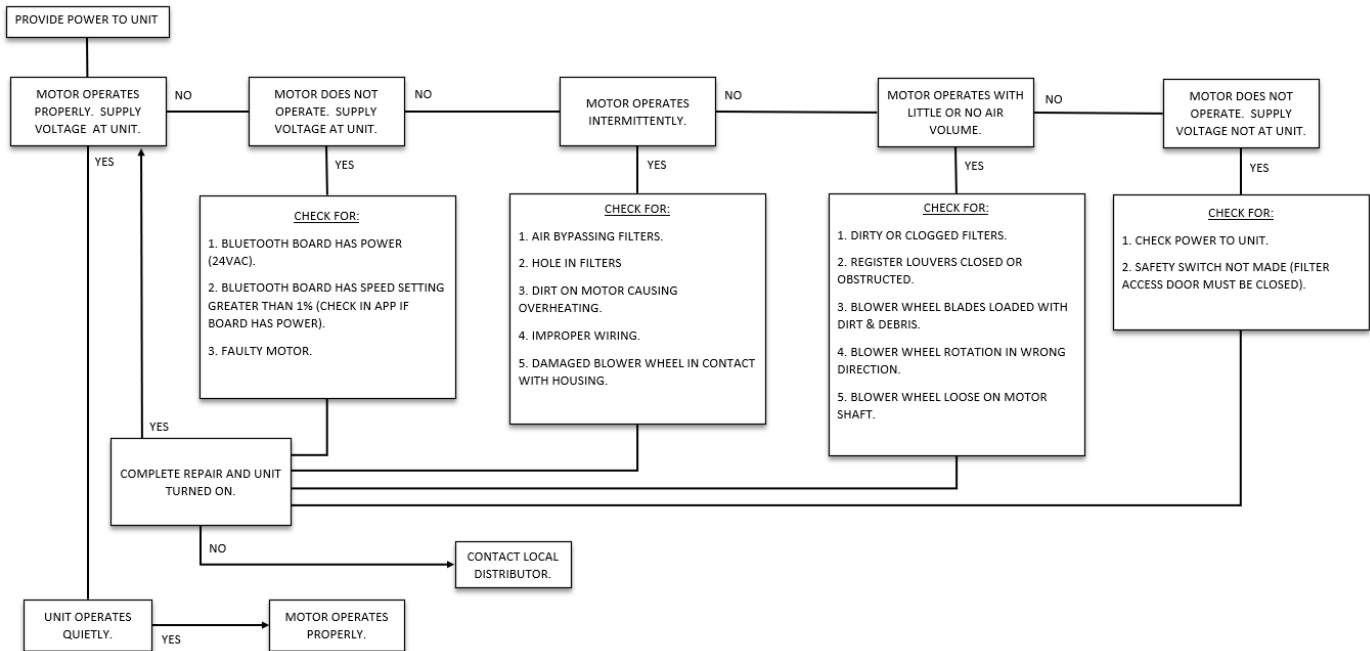
Refer to and consult troubleshooting and wiring diagram sections for any issues.

Troubleshooting

All Air Cleaners are manufactured to give the user continued, trouble-free service. However, as with all mechanical equipment, breakdowns can occur.

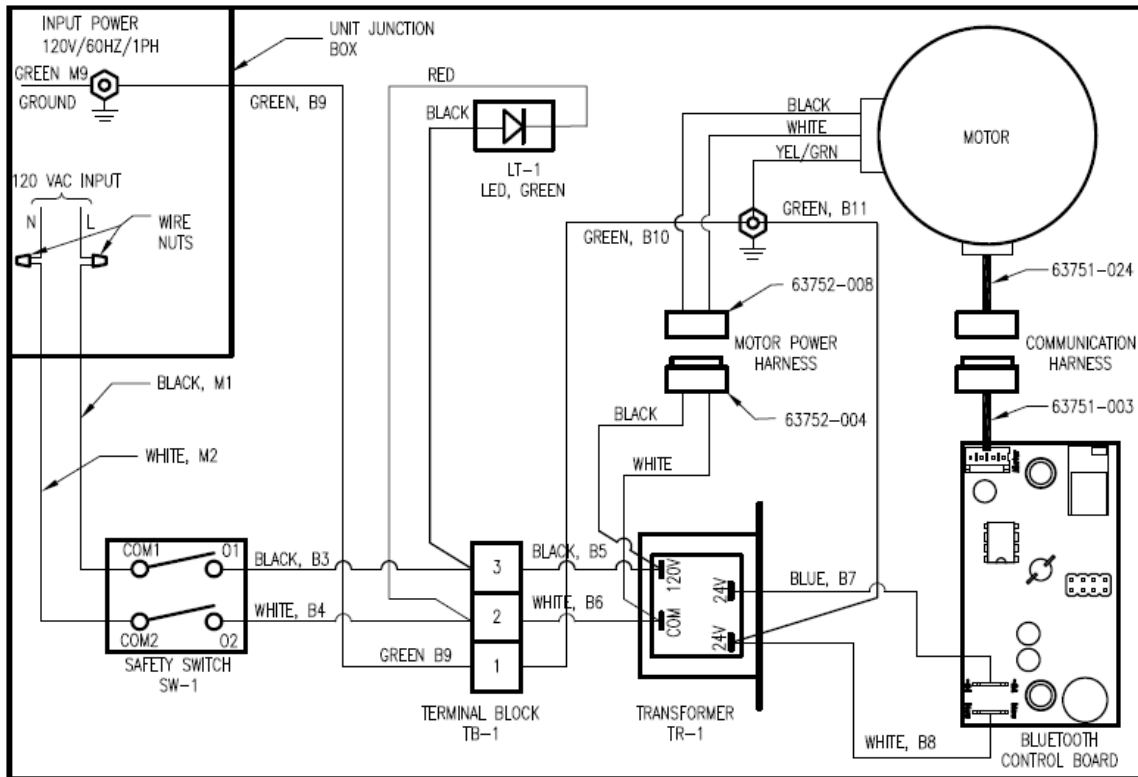
Refer to the Replacement Parts section for replacement parts.

Before troubleshooting the unit, refer to the wiring diagram, check for proper wiring connections, and the input line voltage. Please contact triontechsupport@trioniaq.com for more assistance in troubleshooting the equipment.



Wiring Diagram

IsoClean FM Wiring Diagram



All wiring must meet local National Electrical Codes. This wiring diagram can also be seen on the unit.

Replacement Parts

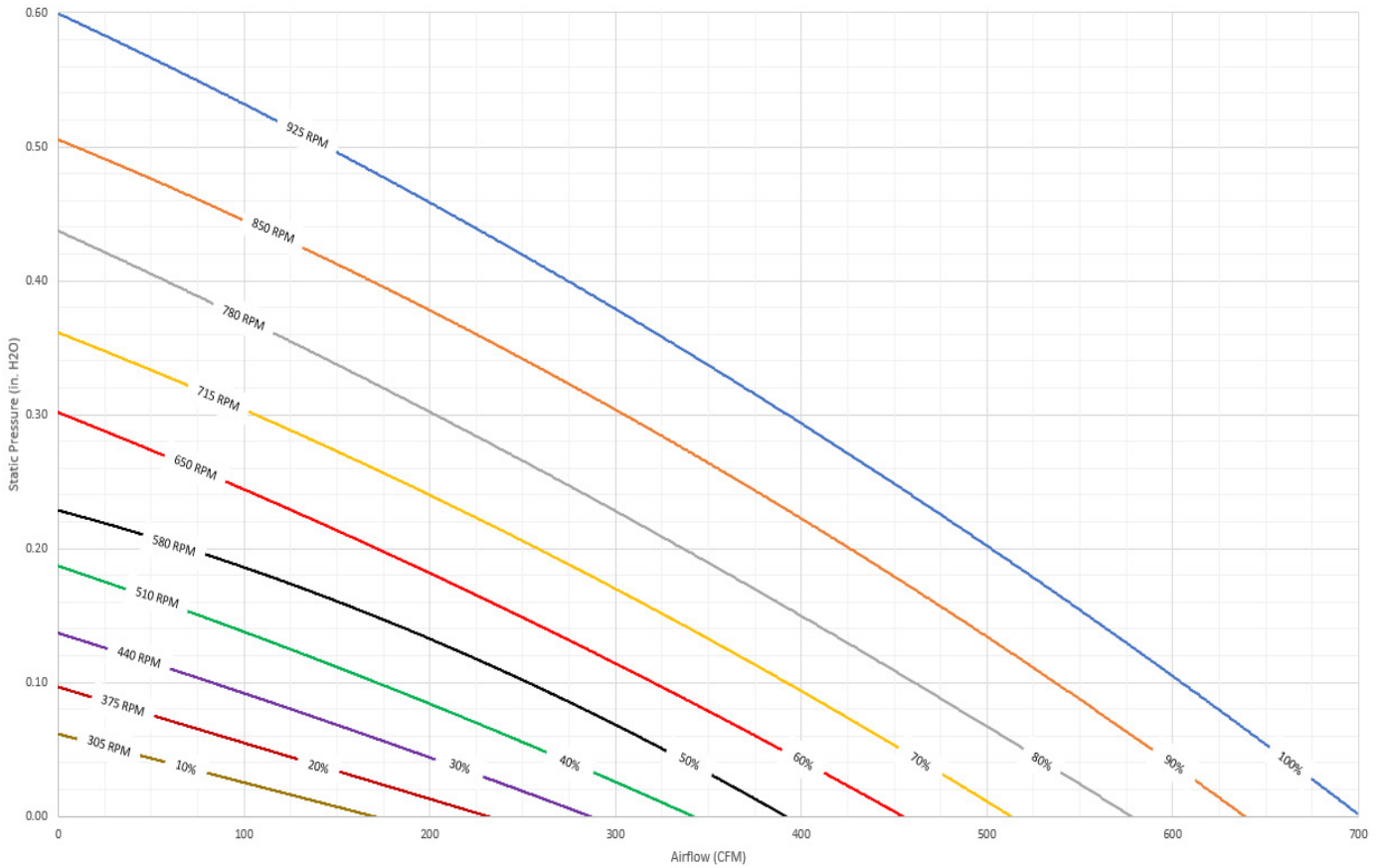
| IsoClean FM Replacement Parts | | |
|-------------------------------|---------------|--|
| Qty. | Part No. | Description |
| 1 | 272434-001 | Bluetooth Control Board |
| 1 | 241101-021 | LED Assembly, Green |
| 1 | 272215-001 | Safety Switch |
| 1 | 272449-001 | ECM Motor, 1/3HP, 120VAC |
| 1 | 340553-001 | MERV 14 Equivalent Pleated Main Filter |
| 1 | 272788-001 | 99.99% HEPA Main Filter |
| 1 | 271926-001 | Propeller, 5 Blade |
| 2 | 120034-510 | Pan Head Machine Screw 1/4-20x3/4" |
| 1 | 240550-001 | Aluminum Mesh Pre-Filter |
| 1 | 440541-003 | Access Door |
| 2 | 271942-001 | Outlet Grille |
| 1 | 62000-0008-05 | Motor Bracket |
| 1 | 63752-008 | Motor Harness, Power, 5-pin |
| 1 | 63751-024 | Motor Harness, Communication, 4-pin, 24" |
| 1 | 63751-003 | Motor Harness, Communication, 4-pin, 14" |
| 1 | 63752-004 | Motor Harness, Power, 3-pin to 5-pin |
| 1 | 63667 | Transformer |

Airflow Curves

Airflow and power curves for the soClean FM are provided. All data captured with a clean primary filter. Added static pressure would be in addition to a new and clean primary filter.

MERV 14 Airflow Curve

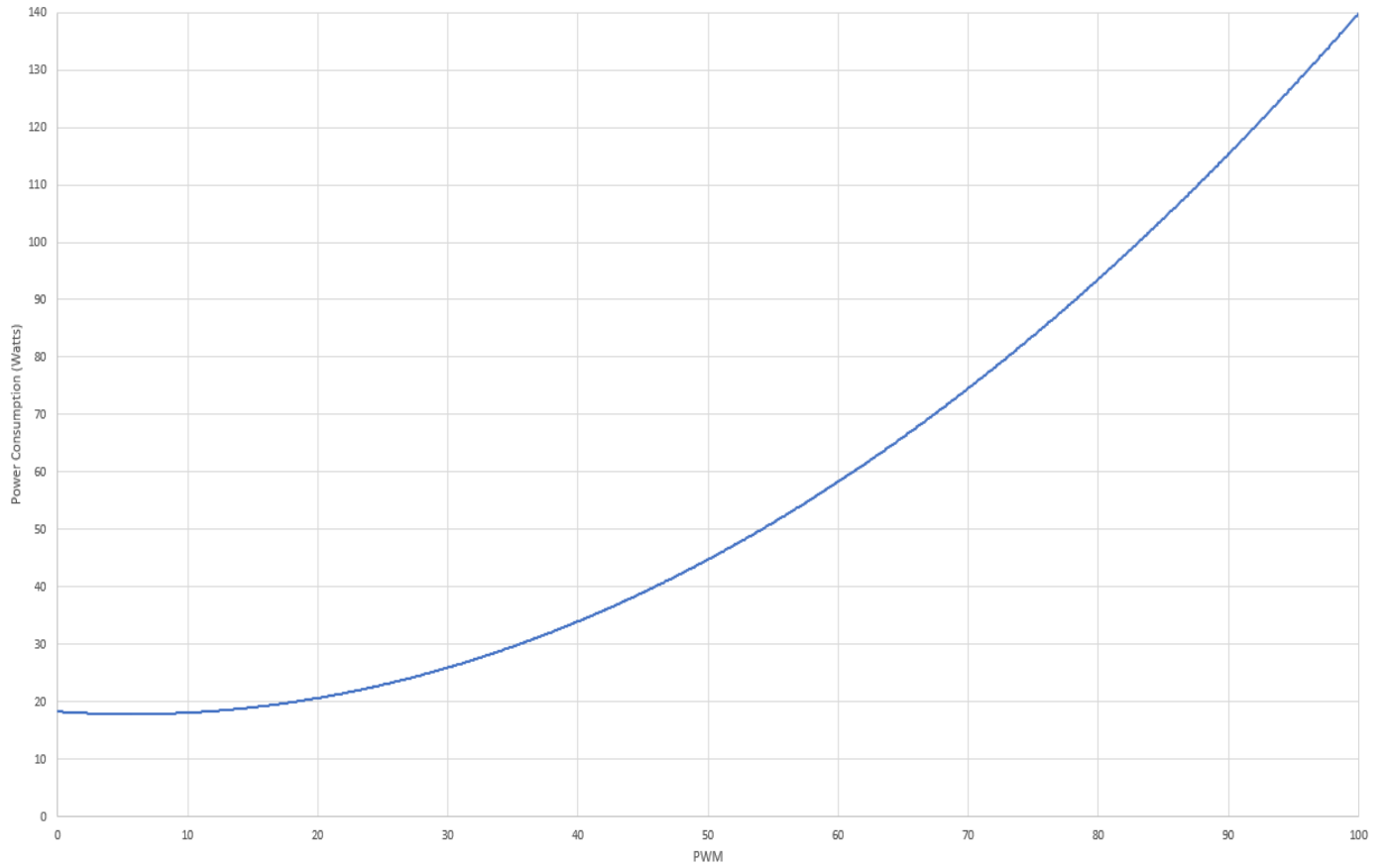
IsoClean FM Airflow Curves - MERV 14



Airflow Curves

MERV 14 Power Curve

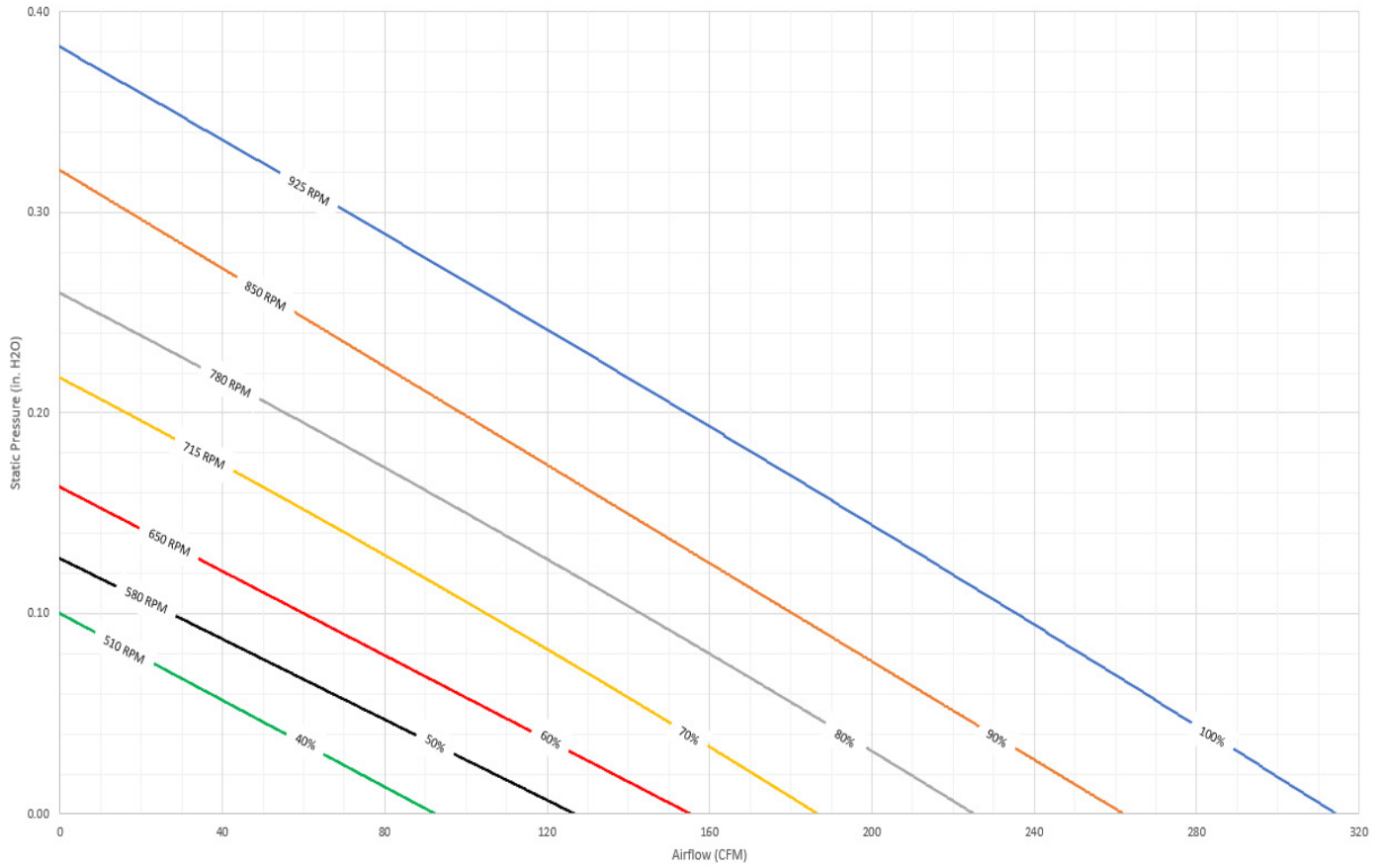
IsoClean FM Power Consumption - MERV 14



Airflow Curves

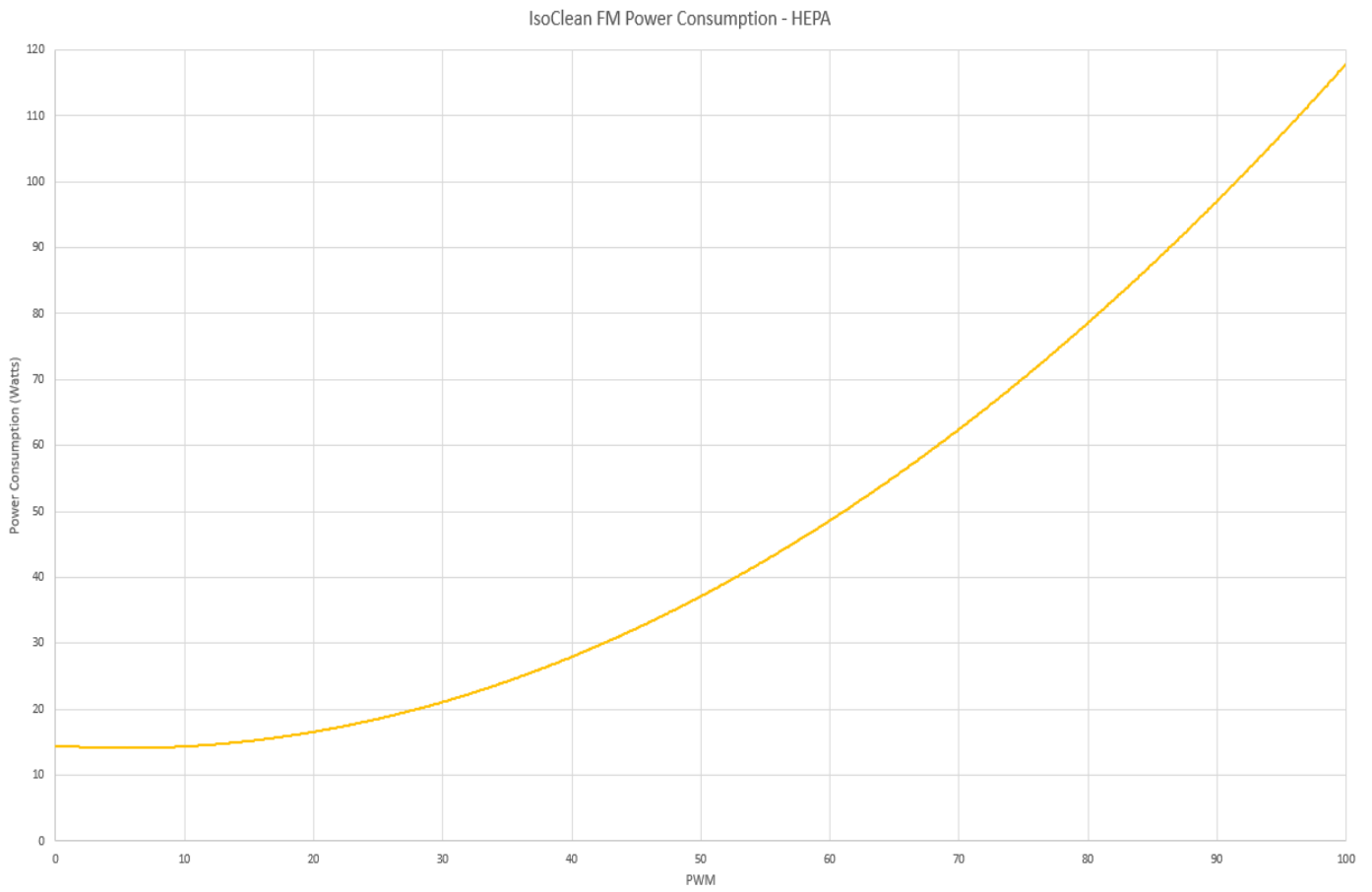
HEPA Airflow Curve

IsoClean FM Airflow Curves - HEPA



Airflow Curves

HEPA Power Curve



Warranty

All TRION air cleaners are warranted for component failure and workmanship for a period of 3 years after purchase. Do not return defective parts without prior permission from the factory. Contact your local TRION distributor or TRION customer service department at 800-844-0002 or email customerservice@trioniaq.com to obtain material return authorizations and service information.



Trion®

101 McNeill Rd. | Sanford, NC 27330

P: 800.884.0002 | F: 800.458.2379 | www.trioniaq.com | customerservice@trioniaq.com
